

FH Series HEMP/EMP Protection Filters

Multi Line 100dB @ 14KHz
Facility/Shielded Room Power Line Filters.

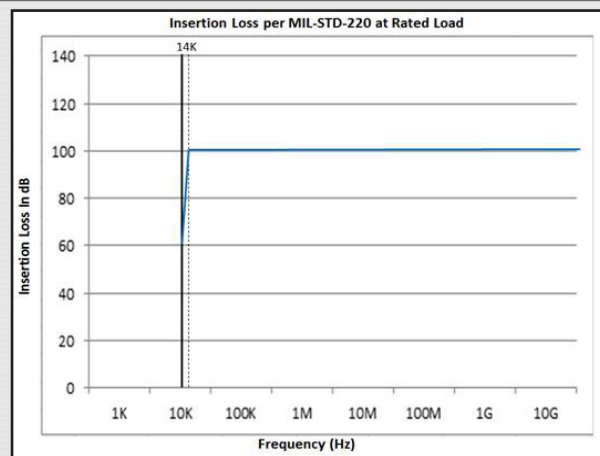
EMI FILTERS



LCR Electronics EMI filter capabilities can help your products meet all requirements and achieve "Mission Success" in the ultimate application. We are a uniquely integrated company for advanced design, engineering, manufacturing, testing and technical support.



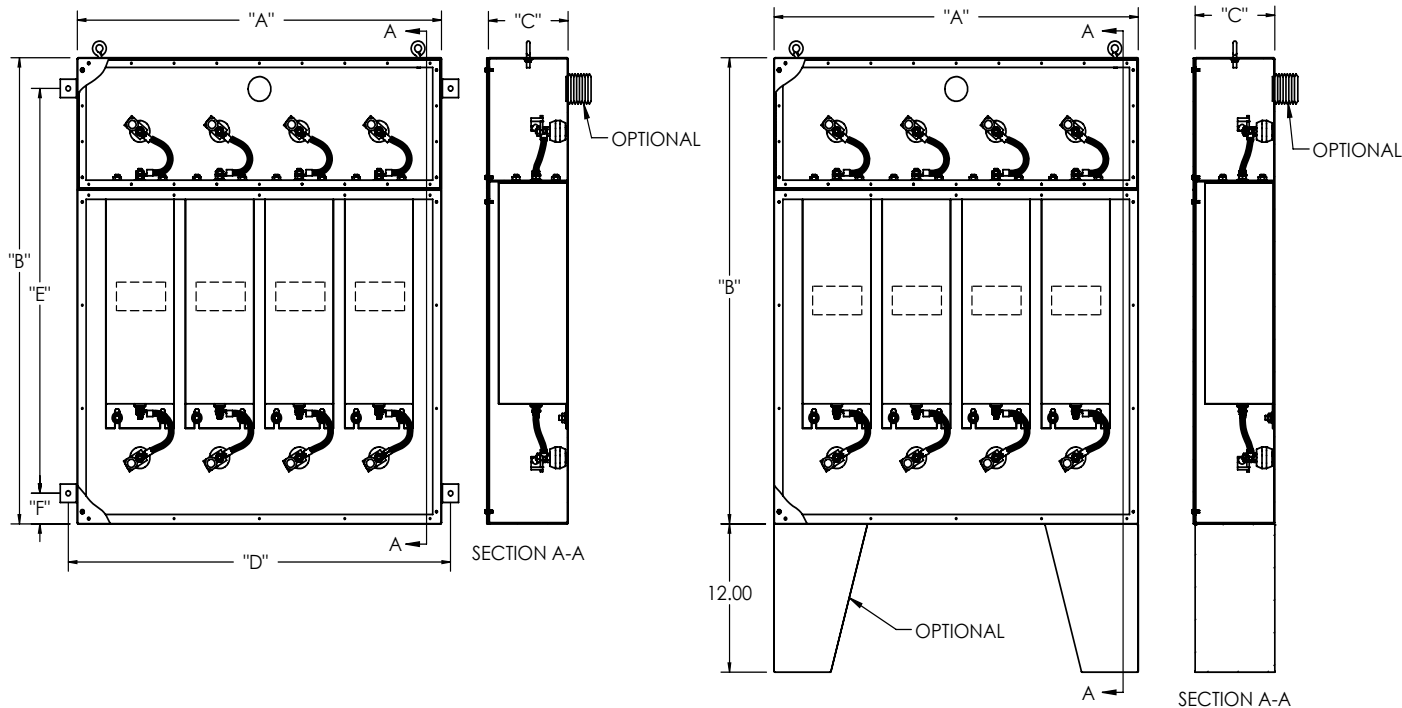
*Multi line filters
installed in a cabinet*



General Specifications

- Our power line filters meet point of entry requirements of MIL-STD-188-125-1 for short and intermediate pulses. These filters are fitted with high transient suppressors in front of the inductive input circuit, resulting in low residual currents during an EMP pulse and protecting the connected equipment.
- Attenuation (insertion loss) is 100dB @ 14KHz to 10GHz measured in accordance with MIL-STD-220. Filter insertion loss will extend to 40 GHz when installed with proper EMI shielding and isolation.
- Filter cabinets supplied with two separate removable covers to access input and output terminals. The output compartment is supplied with an EMI (RF) non-corrosive, environmental gasket to prevent RF Leakage and accommodate maximum isolation between input and output compartments. The input compartment is supplied with a moisture resistant gasket.
- LCR Power Line Filters comply with all the applicable requirements of MIL-PRF-15733 latest revision, MIL-STD-810 and UL1283.
- Bleeder resistors are built into each filter line to discharge the capacitor voltage to ground potential during power shutdown.
- Designed to operate continuously at rated currents and voltages, and are capable of withstanding a 40% current overload for 15 minutes without degradation.
- Voltage drop across each filter line at room temperature and full rated current is less than 1%.
- Electrical Specifications - 120/208 or 277/480VAC, 50/60Hz

SPECIFICATIONS



Filter P/N	Current Ratings (A)	Mechanical Dimensions in inches (mm)					
		A	B	C	D	E	F
FH1960-2W	2x10	8.00 (203.20)	28.00 (711.20)	5.00 (127.00)	9.00 (228.60)	23.00 (584.20)	2.50 (63.50)
FH1960-3W	3x10	12.00 (304.80)	28.00 (711.20)	5.00 (127.00)	13.00 (330.20)	23.00 (584.20)	2.50 (63.50)
Fh1960-4W	4x10	16.00 (406.40)	28.00 (711.20)	5.00 (127.00)	17.00 (431.80)	23.00 (584.20)	2.50 (63.50)
FH1961-2W	2x25	12.00 (304.80)	34.00 (863.60)	7.00 (177.80)	13.00 (330.20)	29.00 (736.60)	2.50 (63.50)
FH1961-3W	3x25	18.00 (457.20)	34.00 (863.60)	7.00 (177.80)	19.00 (482.60)	29.00 (736.60)	2.50 (63.50)
FH1961-4W	4x25	24.00 (609.60)	34.00 (863.60)	7.00 (177.80)	25.00 (635.00)	29.00 (736.60)	2.50 (63.50)
FH1963-2W	2x50	12.00 (304.80)	34.00 (863.60)	7.00 (177.80)	13.00 (330.20)	29.00 (736.60)	2.50 (63.50)
FH1963-3w	3x50	18.00 (457.20)	34.00 (863.60)	7.00 (177.80)	19.00 (482.60)	29.00 (736.60)	2.50 (63.50)
FH1963-4W	4x50	24.00 (609.60)	34.00 (863.60)	7.00 (177.80)	25.00 (635.00)	29.00 (736.60)	2.50 (63.50)
FH1964-2W	2x100	14.00 (355.60)	34.00 (863.60)	7.00 (177.80)	15.00 (381.00)	29.00 (736.60)	2.50 (63.50)
FH1964-3W	3x100	20.00 (508.00)	34.00 (863.60)	7.00 (177.80)	21.00 (533.40)	29.00 (736.60)	2.50 (63.50)
FH1964-4W	4x100	26.00 (660.40)	34.00 (863.60)	7.00 (177.80)	27.00 (685.80)	29.00 (736.60)	2.50 (63.50)
FH1965-2W	2x200	20.00 (508.00)	48.00 (1219.20)	9.00 (228.60)	21.00 (533.40)	43.00 (1092.20)	2.50 (63.50)
FH1965-3W	3x200	29.00 (736.60)	48.00 (1219.20)	9.00 (228.60)	30.00 (762.00)	43.00 (1092.20)	2.50 (63.50)
FH1965-4W	4x200	38.00 (965.20)	48.00 (1219.20)	9.00 (228.60)	39.00 (990.60)	43.00 (1092.20)	2.50 (63.50)
FH1966-2W	2x400	24.00 (609.60)	60.00 (1524.00)	12.00 (304.80)	25.00 (635.00)	55.00 (1397.00)	2.50 (63.50)
FH1966-3W	3x400	35.00 (889.00)	60.00 (1524.00)	12.00 (304.80)	26.00 (660.40)	55.00 (1397.00)	2.50 (63.50)
FH1966-4W	4x400	46.00 (1168.40)	60.00 (1524.00)	12.00 (304.80)	47.00 (1193.80)	55.00 (1397.00)	2.50 (63.50)

* These part numbers represent our standard product offerings. If you want a variation that you do not see listed, please contact LCR and we will customize our design to fit your needs.

* Dimensions are shown for reference purposes only. Specifications subject to change.

WARRANTY

LCR provides a limited one-year warranty for its products. A copy of the complete warranty plus other terms and conditions of sale are available upon request.