

055/055M High Performance Double Stage Filter for General Purpose and Medical Type

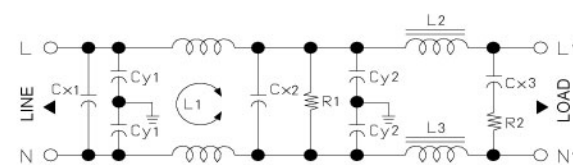
UL® UL® Up to 10A RoHS



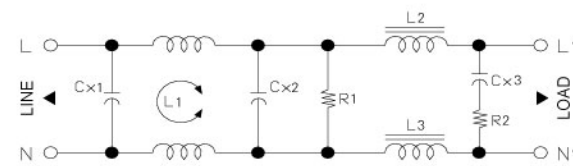
A



B



055 - Electrical Schematic



055M - Electrical Schematic

055 Series

Features

High performance double stage filter for general purpose, superior differential mode performance.

Typical Applications

Industrial, power supply and controls.

055M Series

Features

Low leakage current high performance double stage filter for medical type, superior differential mode performance.

Typical Applications

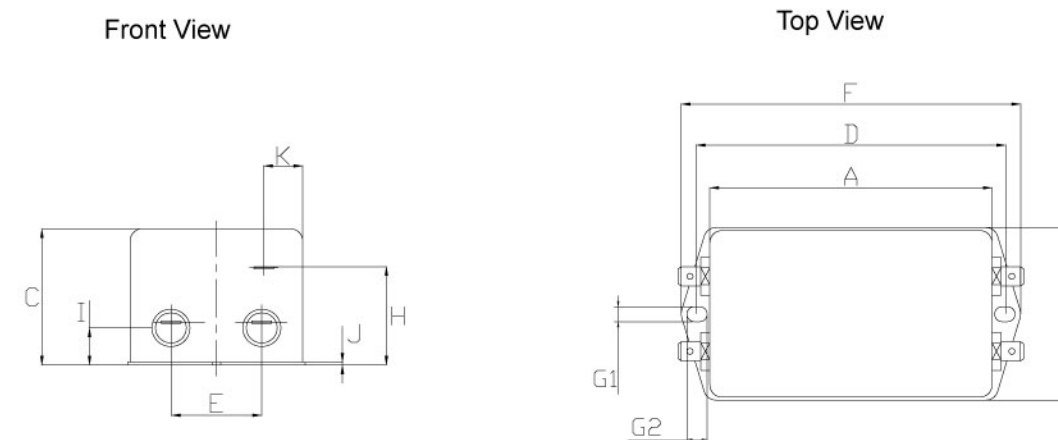
Medical equipment.

Technical Data

Rated Voltage Max. (V)	250VAC	Leakage Current 055 Series	
Rated Current (A)	1 - 20A @ 40°C	@ 250 VAC 50 Hz	2mA Max.
Operating Frequency (Hz)	50 / 60Hz	@ 115 VAC 60 Hz	1.1mA Max.
Hipot Rating		Leakage Current 055M Series	
Line to Line	1450V DC	@ 250 VAC 50 Hz	5uA
Line to Ground	2250V DC	@ 115 VAC 60 Hz	2uA
Case	Plated steel	IP Standard	65
Packaging Quantity	45 / 60 pcs per carton	Climatic category	25 / 100 / 21

055 Model No.	055M Model No.	Rated Current @ 40°C	Unit Weight (g)	Terminal Options	
				In	Out
055.80301.00	055M.80301.00	3 A	300	Faston 6.35*0.8	Faston 6.35*0.8
055.80601.00	055M.80601.00	6 A	400	Faston 6.35*0.8	Faston 6.35*0.8
055.81011.00	055M.81011.00	10 A	500	Faston 6.35*0.8	Faston 6.35*0.8
055.82001.00	055M.82001.00	20 A	520	Faston 6.35*0.8	Faston 6.35*0.8

055 / 055M Mechanical Outlines



055 / 055M Mechanical Dimensions (mm) For reference only

Model No.	Model No.	A	B	C	D	E	F	G	H	I	J	K
055.80301.00	055M.80301.00	92.5	58.0	41.0	105.0	30.0	115.0	5*6.8	33.0	13.0	0.8	13.5
055.80601.00	055M.80601.00	92.5	58.0	41.0	105.0	30.0	115.0	5*6.8	33.0	13.0	0.8	13.5
055.81011.00	055M.81011.00	92.5	58.0	41.0	105.0	30.0	115.0	5*6.8	33.0	13.0	0.8	13.5
055.82001.00	055M.82001.00	92.5	58.0	41.0	105.0	30.0	115.0	5*6.8	33.0	13.0	0.8	13.5

All dimensions in mm, 1 inch=25.4 mm

Insertion Loss in dB Measured in a 50Ω System

Model No.	055.8 Common Mode (Frequencies in MHz)								Model No.	055M.8 Common Mode (Frequencies in MHz)							
	0.05	0.1	0.15	0.5	1.0	5.0	10.0	30.0		0.05	0.1	0.15	0.5	1.0	5.0	10.0	30.0
055.80301.00	35.0	31.0	33.0	58.0	74.0	75.0	78.0	53.0	055M.80301.00	25.0	28.0	30.0	58.0	74.0	75.0	65.0	53.0
055.80601.00	33.0	40.0	43.0	57.0	67.0	72.0	63.0	47.0	055M.80601.00	20.0	25.0	33.0	57.0	70.0	72.0	63.0	47.0
055.81011.00	28.0	35.0	38.0	46.0	53.0	55.0	45.0	40.0	055M.81011.00	23.0	27.0	30.0	46.0	53.0	55.0	45.0	40.0
055.82001.00	22.0	28.0	33.0	43.0	50.0	48.0	47.0	35.0	055M.82001.00	22.0	28.0	33.0	43.0	50.0	48.0	47.0	30.0

Model No.	055.8 Differential Mode (Frequencies in MHz)								Model No.	055M.8 Differential Mode (Frequencies in MHz)							
	0.05	0.1	0.15	0.5	1.0	5.0	10.0	30.0		0.05	0.1	0.15	0.5	1.0	5.0	10.0	30.0
055.80301.00	68.0	66.0	75.0	80.0	83.0	75.0	63.0	62.0	055M.80301.00	60.0	60.0	70.0	75.0	79.0	70.0	65.0	50.0
055.80601.00	52.0	72.0	74.0	71.0	69.0	60.0	55.0	50.0	055M.80601.00	45.0	67.0	69.0	67.0	69.0	55.0	50.0	49.0
055.81011.00	45.0	70.0	72.0	77.0	77.0	68.0	62.0	58.0	055M.81011.00	40.0	65.0	67.0	72.0	70.0	62.0	57.0	53.0
055.82001.00	27.0	42.0	65.0	80.0	65.0	70.0	65.0	60.0	055M.82001.00	35.0	38.0	60.0	65.0	60.0	65.0	60.0	55.0

Other specifications, requirements and customizations can be offered upon request.