

# 090/090M Single Phase Single Stage General Purpose and Medical Type Filters



## 090 Series

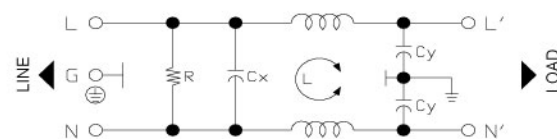
General Purpose Single Phase Single Stage Filters

### Features

Compact single phase, general purpose power line filter with faston / stud / wire terminals.

### Typical Applications

Single phase industrial equipment, power supply systems and controls.



090 - Electrical Schematic

## 090M Series

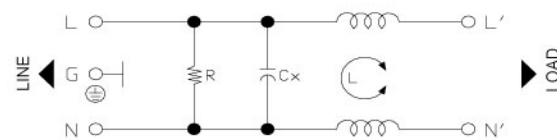
Low Leakage Current Medical Type Single Phase Single Stage Filters

### Features

Low leakage current, compact single phase, general purpose power line filter with faston / stud / wire terminals.

### Typical Applications

Medical equipment, sensitive power supply and controls.



090M - Electrical Schematic

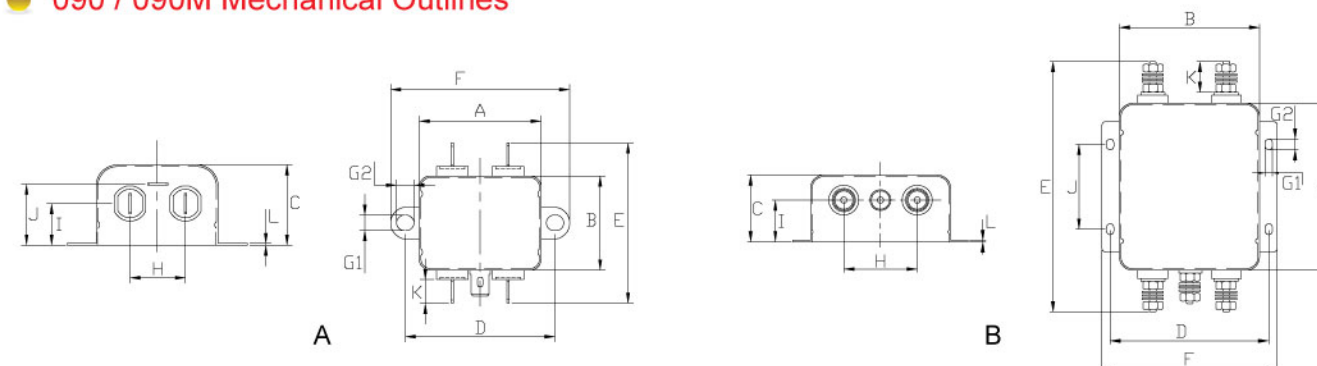
### Technical Data

Rated Voltage Max. (V)	250VAC	Leakage Current 090 Series	
Rated Current (A)	1 - 40A @ 40°C	@ 250 VAC 50 Hz	0.42 mA Max.
Operating Frequency (Hz)	50 / 60Hz	@ 115 VAC 60 Hz	0.23 mA Max.
Hipot Rating		Leakage Current 090M Series	
Line to Line	1450V DC	@ 250 VAC 50 Hz	10µA Max.
Line to Ground	2250V DC	@ 115 VAC 60 Hz	5µA Max.
Case	Plated steel	IP Standard	65
Packaging Quantity	108/50/16 pcs per carton	Climatic category	25 / 85 / 21

090 Model No.	090M Model No.	Rated Current @ 40°C	Mechanical Diagram	Unit Weight (g)	Terminal Options	
					In	Out
090.00101.00	090M.00101.00	1.0	A	75.0	Faston 6.35*0.8 / M4	Faston 6.35*0.8 / M4
090.00301.00	090M.00301.00	3.0	A	76.0	Faston 6.35*0.8 / M4	Faston 6.35*0.8 / M4
090.00601.00	090M.00601.00	6.0	A	79.0	Faston 6.35*0.8 / M4	Faston 6.35*0.8 / M4
090.01001.00	090M.01001.00	10.0	A	87.0	Faston 6.35*0.8 / M4	Faston 6.35*0.8 / M4
090.01501.00	090M.01501.00	15.0	A	166.0	Faston 6.35*0.8 / M4	Faston 6.35*0.8 / M4
090.02001.00	090M.02001.00	20.0	A	157.0	Faston 6.35*0.8 / M4	Faston 6.35*0.8 / M4
090.02501.00	090M.02501.00	25.0	B	731.0	M4 / M6	M4 / M6
090.03001.00	090M.03001.00	30.0	B	741.0	M6	M6
090.04001.00	090M.04001.00	40.0	B	757.0	M6	M6

Please mark terminal type at the end of the P/N when ordering or inquiring

### 090 / 090M Mechanical Outlines



### 090 / 090M Mechanical Dimensions (mm)

For reference only

Model No.	Model No.	A	B	C	D	E	F	G	H	I	J	K
090.00101.00	090M.00101.00	44.0	33.0	29.0	54.0	56.8	64.0	2-Φ5.3*6.3	20.0	15.0	22.0	8.5
090.00301.00	090M.00301.00	44.0	33.0	29.0	54.0	56.8	64.0	2-Φ5.3*6.3	20.0	15.0	22.0	8.5
090.00601.00	090M.00601.00	44.0	33.0	29.0	54.0	56.8	64.0	2-Φ5.3*6.3	20.0	15.0	22.0	8.5
090.01001.00	090M.01001.00	44.0	33.0	29.0	54.0	56.8	64.0	2-Φ5.3*6.3	20.0	15.0	22.0	8.5
090.01501.00	090M.01501.00	51.0	52.0	29.0	61.0	75.8	71.0	2-Φ5.3*6.3	20.0	14.0	22.0	8.5
090.02001.00	090M.02001.00	51.0	52.0	29.0	61.0	75.8	71.0	2-Φ5.3*6.3	20.0	14.0	22.0	8.5
090.02501.00	090M.02501.00	100.0	84.0	40.0	95.0	150.6	105.0	2-Φ4.5*6.5	44.0	25.0	50.8	20.5
090.03001.00	090M.03001.00	100.0	84.0	40.0	95.0	150.6	105.0	2-Φ4.5*6.5	44.0	25.0	50.8	20.5
090.04001.00	090M.04001.00	100.0	84.0	40.0	95.0	150.6	105.0	2-Φ4.5*6.5	44.0	25.0	50.8	20.5

All dimensions in mm, 1 inch=25.4 mm

### Insertion Loss in dB Measured in a 50Ω System

Model No.	Common Mode IL (Frequencies in MHz)								Model No.	Common Mode IL (Frequencies in MHz)							
	0.05	0.1	0.15	0.5	1.0	5.0	10.0	30.0		0.05	0.1	0.15	0.5	1.0	5.0	10.0	30.0
090.00101.00	21.0	27.0	31.0	43.0	52.0	52.0	50.0	50.0	090M.00101.00	20.0	26.0	30.0	40.0	45.0	50.0	50.0	45.0
090.00301.00	21.0	25.0	29.0	41.0	50.0	50.0	50.0	50.0	090M.00301.00	20.0	26.0	30.0	41.0	48.0	50.0	50.0	45.0
090.00601.00	16.0	20.0	25.0	37.0	45.0	45.0	45.0	40.0	090M.00601.00	16.0	20.0	25.0	35.0	42.0	40.0	40.0	40.0
090.01001.00	13.0	18.0	23.0	35.0	43.0	43.0	43.0	40.0	090M.01001.00	13.0	18.0	22.0	33.0	38.0	35.0	35.0	35.0
090.01501.00	10.0	16.0	19.0	30.0	40.0	40.0	40.0	40.0	090M.01501.00	10.0	16.0	19.0	29.0	35.0	30.0	30.0	30.0
090.02001.00	10.0	16.0	19.0	30.0	40.0	40.0	40.0	40.0	090M.02001.00	10.0	16.0	19.0	29.0	35.0	30.0	30.0	30.0
090.02501.00	8.0	12.0	17.0	28.0	38.0	38.0	38.0	35.0	090M.02501.00	8.0	12.0	16.0	27.0	33.0	30.0	30.0	30.0
090.03001.00	8.0	12.0	17.0	28.0	38.0	38.0	38.0	35.0	090M.03001.00	5.0	10.0	12.0	23.0	30.0	28.0	28.0	28.0
090.04001.00	5.0	10.0	13.0	25.0	34.0	34.0	34.0	30.0	090M.04001.00	5.0	10.0	12.0	23.0	30.0	28.0	28.0	28.0

- Line to ground capacitors are available up to 4,700 pF.
- Other specifications, requirements and customizations can be offered upon request.